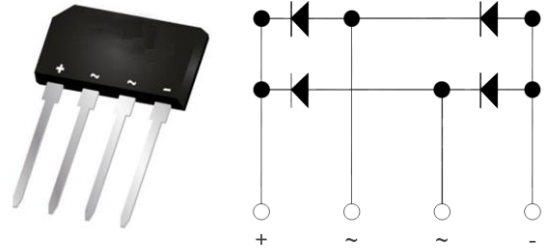


Features

- ◆ Glass Passivated Chip
- ◆ High Surge Current Capability
- ◆ Low Reverse Leakage Current
- ◆ Case to Terminal Isolation Voltage 2500V

Application

- ◆ Switching Mode Power Supply
- ◆ Household Electric Appliances
- ◆ General Purpose Single-Phase Bridge Rectifier



Machanical Data

- ◆ Case: Plastic Package
- ◆ Marking / Polarity: Marked on Body
- ◆ Weight: About 2.2 Grams

Maximum Ratings and Thermal Characteristics $T_A = 25^\circ\text{C}$ unless otherwise noted

Symbol	Parameter		Rating	Unit
V_{RRM}	Recurrent Peak Reverse Voltage		1000	V
$I_{F(AV)}$	Average Forward Output Rectified Current, $T_A = 120^\circ\text{C}$		8.0	A
V_F	Maximum Forward Voltage Per Leg, $I_{FM} = 8.0\text{A}$		1.05	V
I_{FSM}	Peak Forward Surge Current Single Half Sine-wave Superimposed on Rated Load		180	A
I_R	Maximum DC Reverse Current at Rated DC Blocking Voltage	$T_A = 25^\circ\text{C}$	5.0	μA
		$T_A = 125^\circ\text{C}$	500	
i^2t	Rating for Fusing ($t < 8.3\text{ms}$)		134	A^2S
V_{isol}	Rms Isolation Voltage from Case to Leads		2500	V
C_J	Typical Junction Capacitance		50	pF
$R_{\theta JC}$	Maximum Thermal Resistance Per Leg		2.0	$^\circ\text{C/W}$
T_J, T_{STG}	Operating Junction and Storage Temperature Range		-55 to 150	$^\circ\text{C}$

Notes:

- a. Junction to case with heatsink.
- b. Recommended mounting position is to bolt down on heatsink with silicone thermal compound for maximum heat transfer with M3 screw.

■ Characteristic Curve

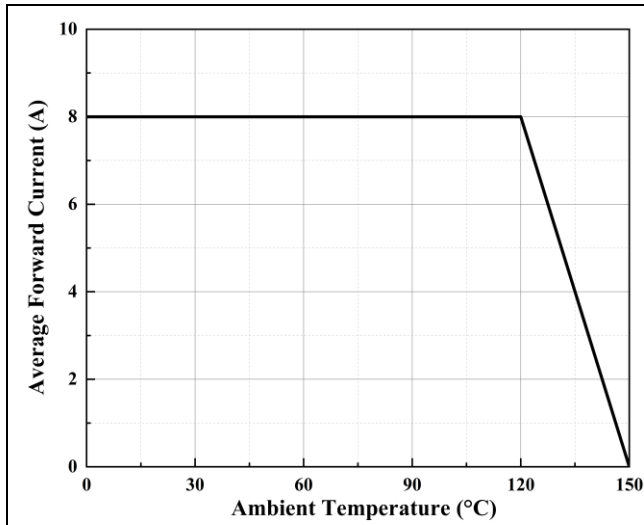


Figure 1. Forward Current Derating Curve

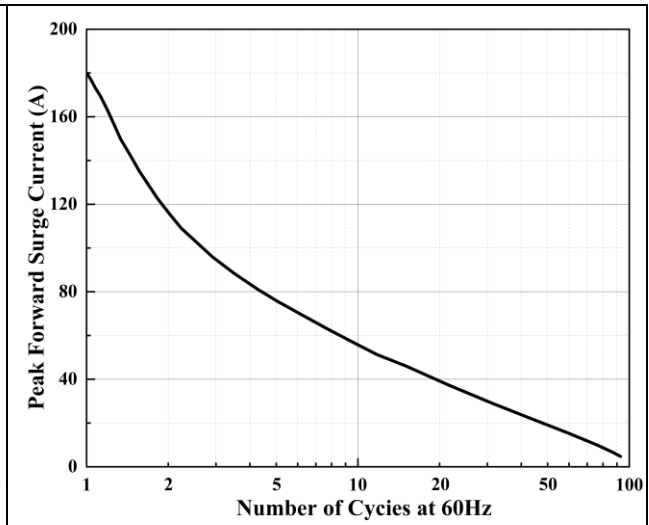


Figure 2. Maximum Non-Repetitive Surge Current

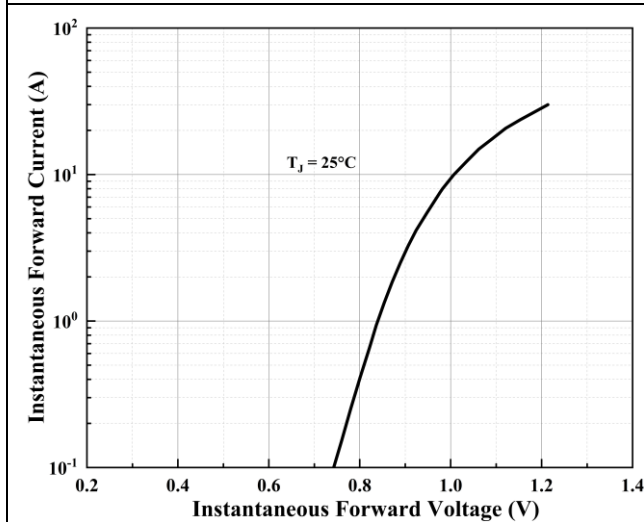


Figure 3. Typical Forward Characteristics Per Diode

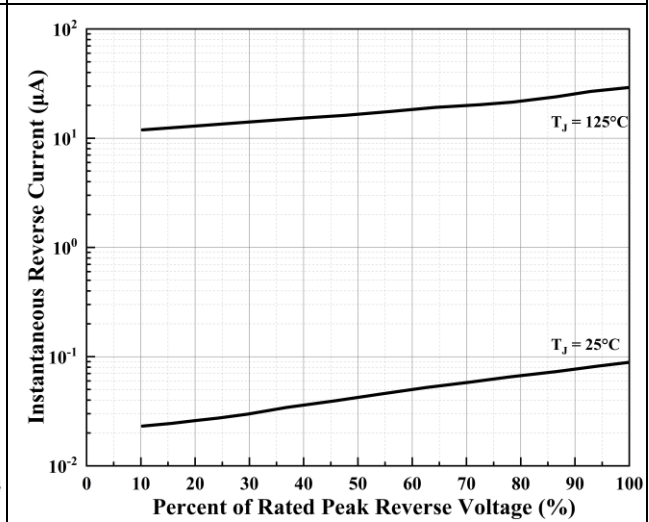
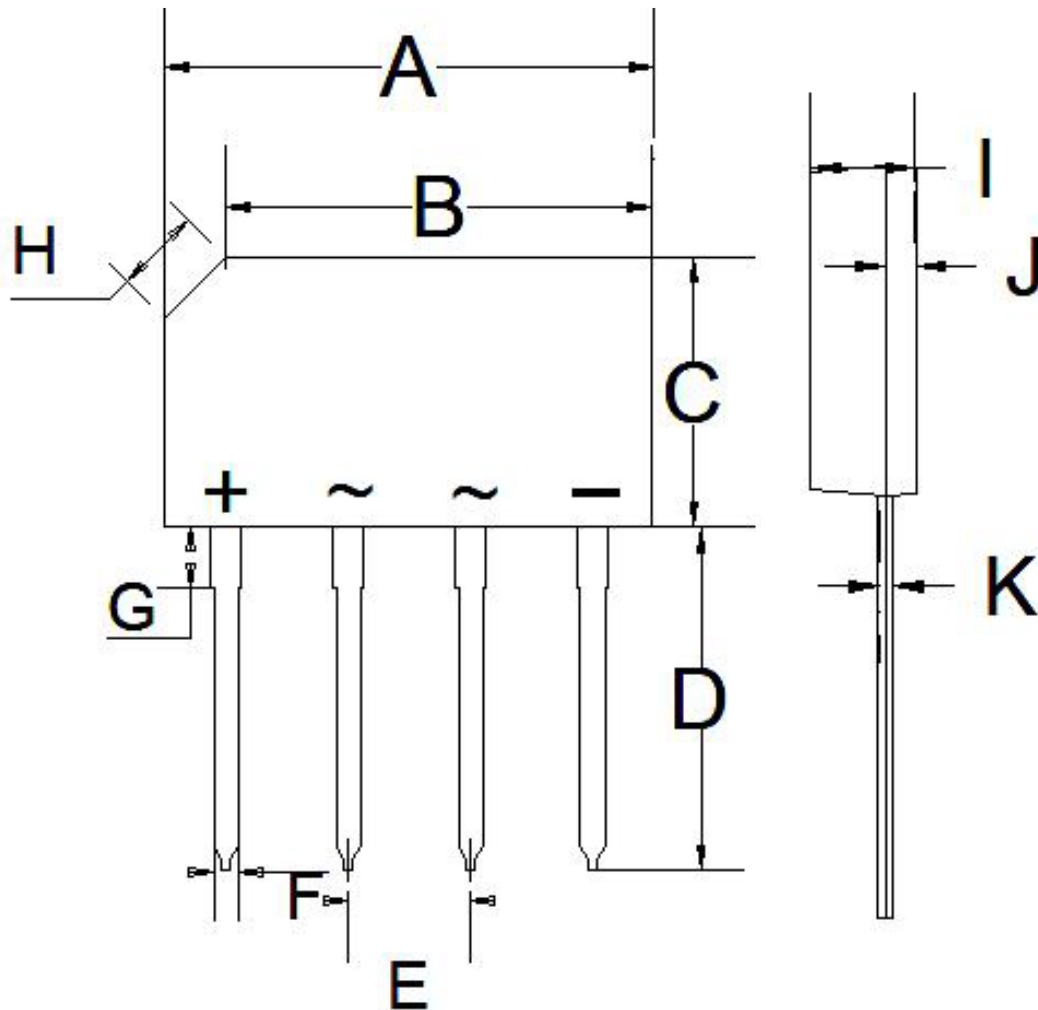


Figure 4. Typical Reverse Leakage Characteristics Per Diode

Package Information

GBL Series



Item	Min (mm)	Max (mm)
A	19.70	20.30
B	17.20	17.70
C	10.70	11.20
D	13.70	14.20
E	4.80	5.20
F	0.95	1.05
G	2.30	2.70
H	3.30	3.80
I	3.30	3.70
J	0.95	1.05
K	0.45	0.55